

NONGSA NEPTUNE REGATTA

APPENDIX A

RACE 1: NONGSA – BENAN ISLAND

START, in the vicinity North of Turi Beach Jetty.

GATE 1 : Latitude N00 50.00

GATE 2 : Latitude N00 40.00

FINISH : Latitude N00 30.00

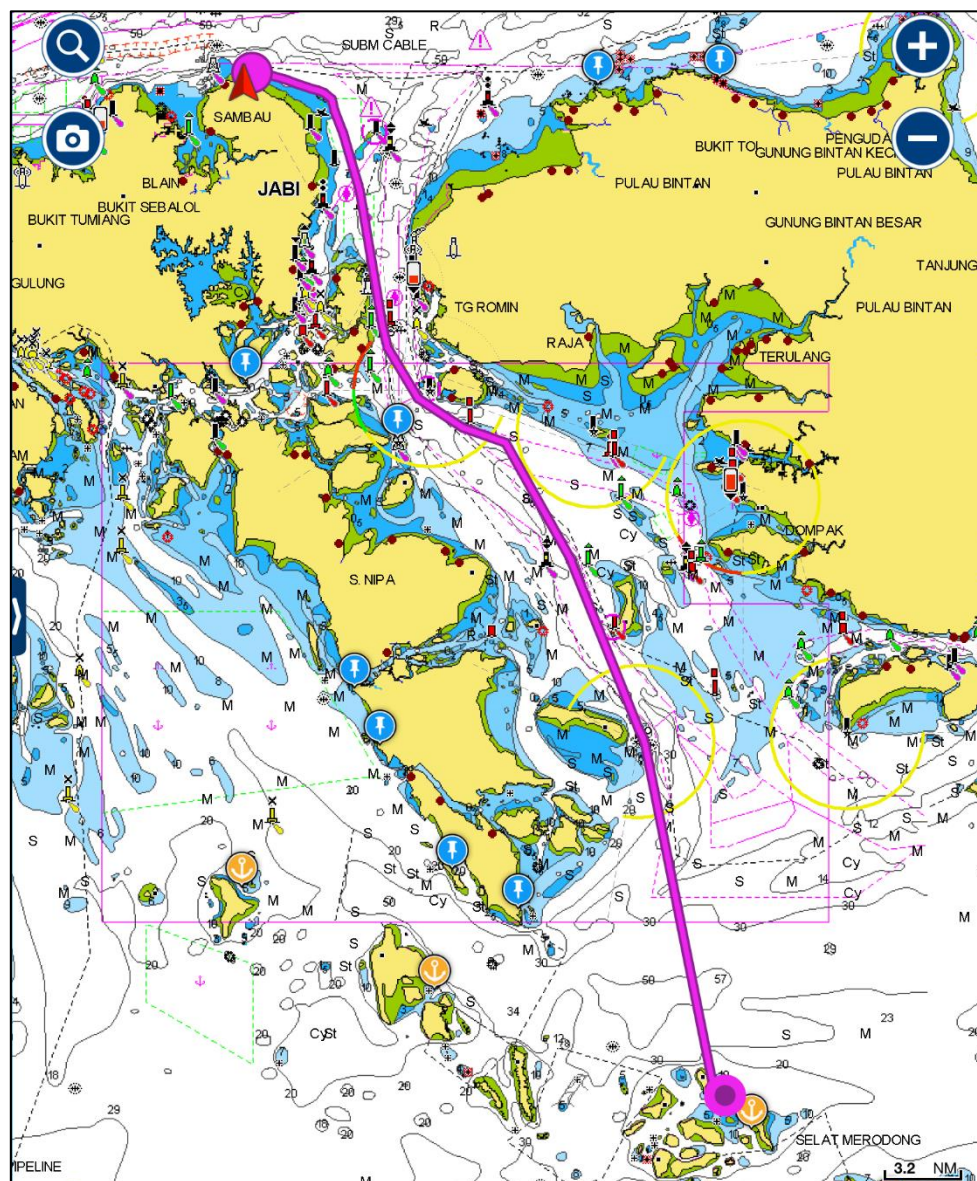


Chart not to be used for navigation nor represents actual race course.

NONGSA NEPTUNE REGATTA

RACE 2: BENAN ISLAND – SIKELING ISLAND

START : vicinity south of Benan Island.
DUA ISLANDS : Pass to Starboard
PINTU ISLAND : Pass to Port
BUAYA & SIKELING : Pass to Starboard
GATE 3 : Latitude N00 15.00
FINISH, between a pole displaying Orange Flag on the Beach and an inflatable Cylindrical Yellow Buoy on Port end. Approximately N00 8.00 E104 13.50

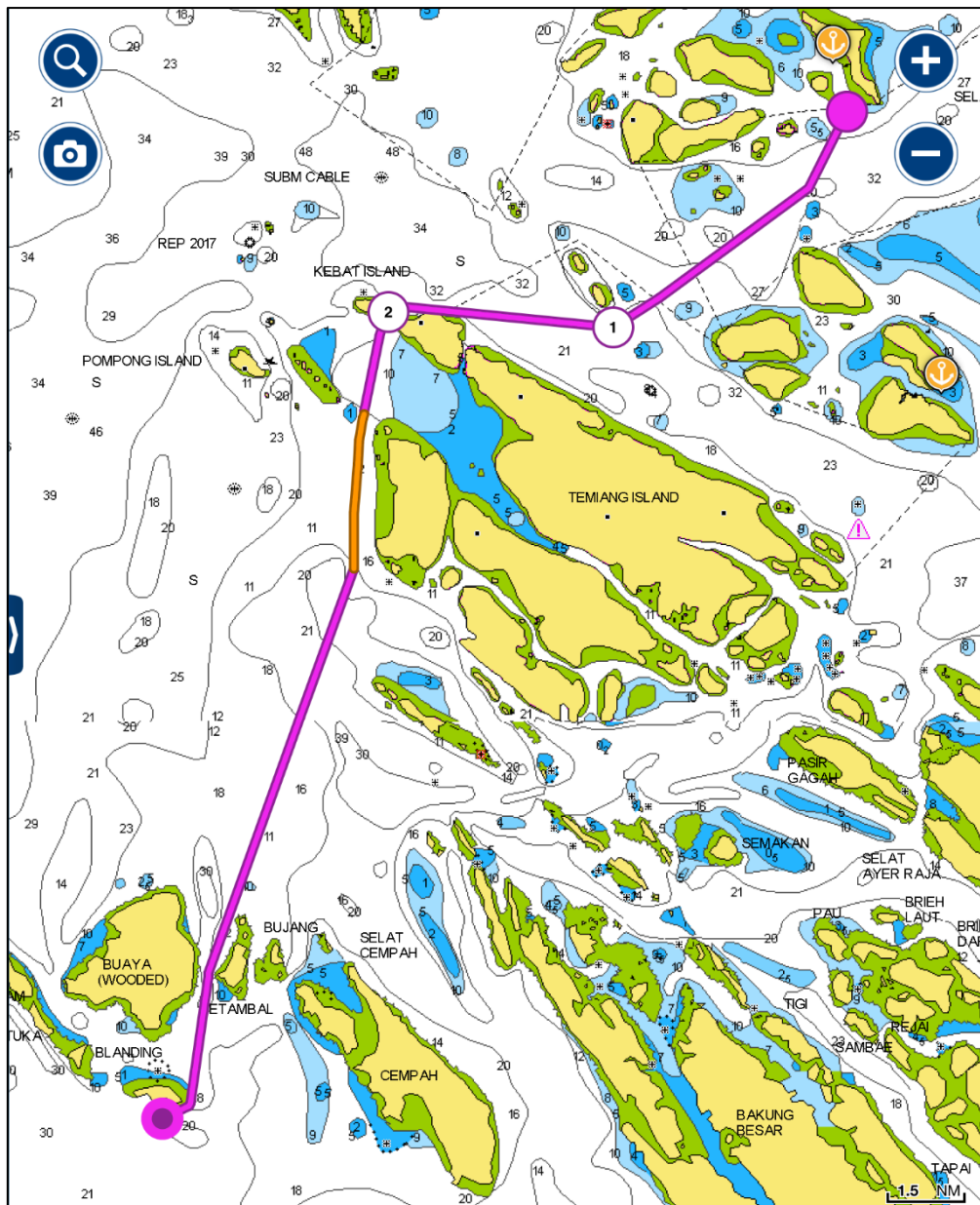


Chart not to be used for navigation nor represents actual race course.

NONGSA NEPTUNE REGATTA

RACE 4: EQUATOR RACE

START & FINISH, vicinity south of Sikeling Island.

EQUATOR GATE between Committee Boat and an inflatable Yellow Cylindrical buoy at approximately N00 00.00'.

- Southbound: Between Committee Boat on Starboard end and Yellow Buoy on Port end.
- Northbound: Between Committee Boat on Port end and Yellow Buoy on Starboard end.

Times shall be taken as each boat crosses the Equator at the end of their Southbound leg. Boats shall call the 'Race Committee' on VHF 77 2-minutes prior to passing through the gate at the start of their Northbound leg to announce their re-start.

Times shall be taken as each boat crosses the Equator at the start of their Northbound leg. Elapsed times of the Southbound and Northbound legs shall be added together to obtain each boat's Overall Elapsed Time.

NONGSA NEPTUNE REGATTA

RACE 5: SIKELING – MUBUT DARAT

START, vicinity north of Buaya Island

GATE 4 : Latitude N00 20.00

GATE 5 : Latitude N00 40.00

FINISH : Latitude N00 47.00

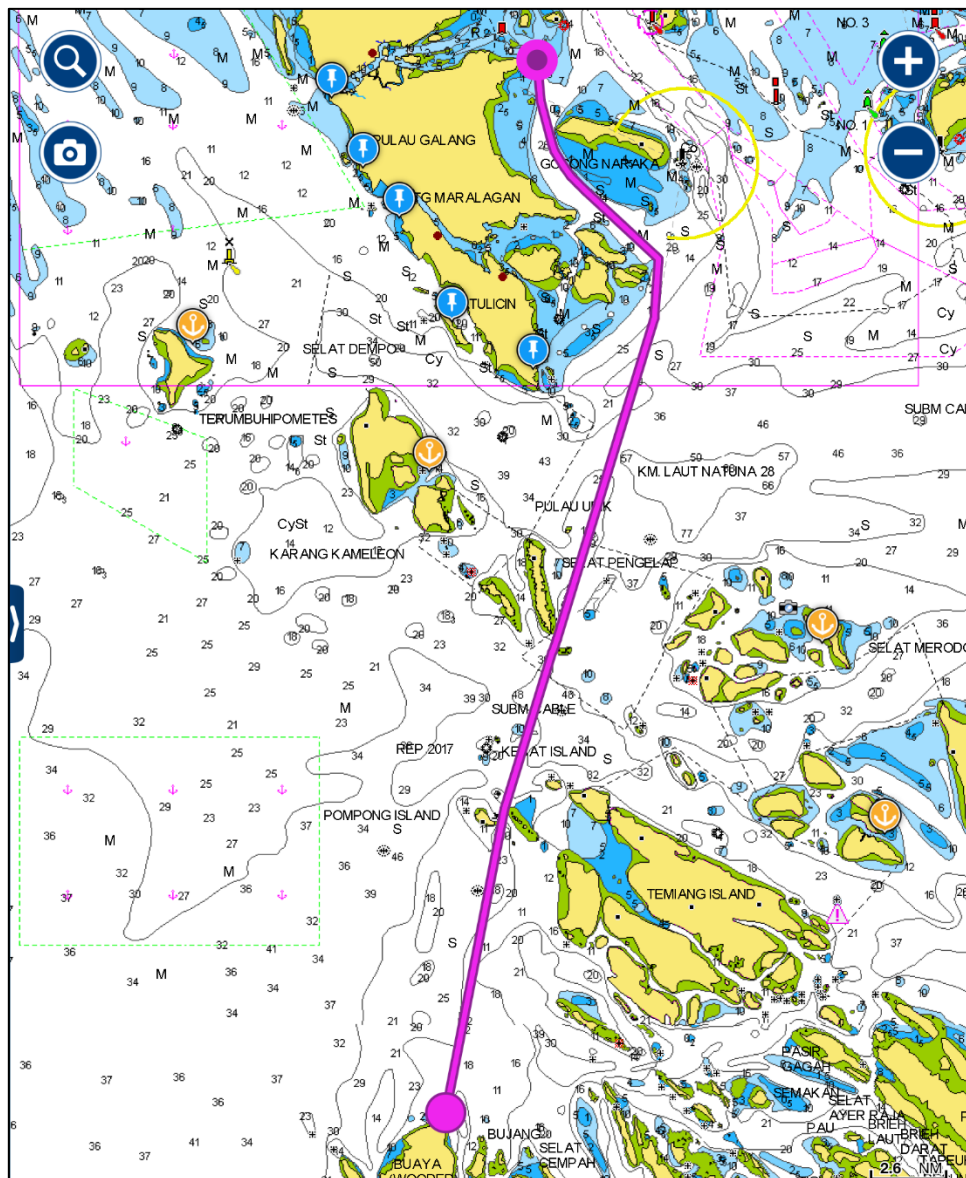


Chart not to be used for navigation nor represents actual race course.

NONGSA NEPTUNE REGATTA

RACE 6: MUBUT DARAT – NONGSA

START: vicinity North of Mubut Darat.

GATE 6 : Latitude N01 00.00

GATE 7 : Latitude N01 05.00

GATE 8 : Latitude N01 10.00

FINISH: between a staff displaying Orange Flag on Turi Beach Pier on Port end and an inflatable Cylindrical Yellow Buoy on Starboard end.



Chart not to be used for navigation nor represents actual race course.